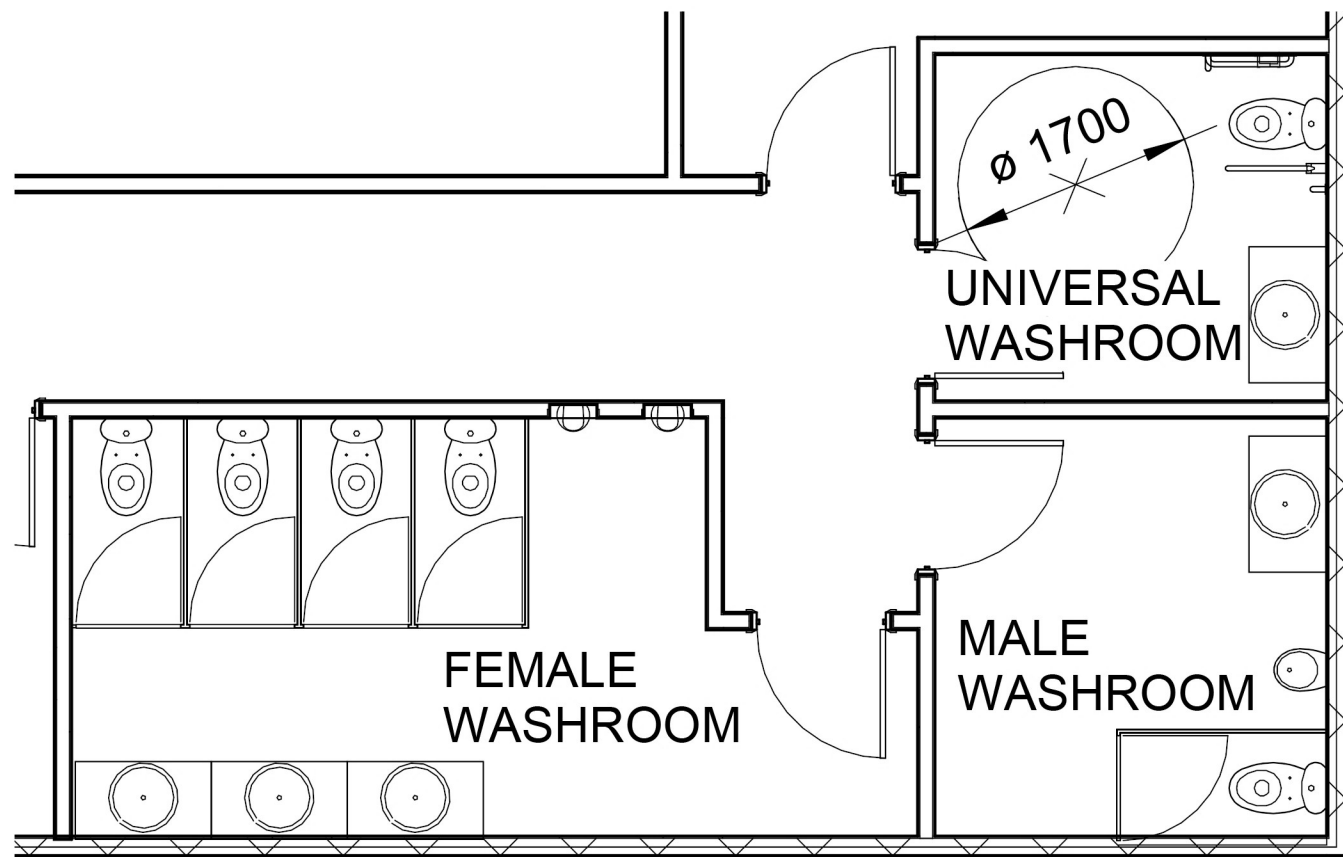


This modern Family Cultural Center building is a spacious community centre with great views and natural lighting. The interior is both simple and versatile in utility, designed to feel open and welcoming with easily accessible meeting and activity spaces. The centre features two multi-purpose rooms, a daycare, an art studio, a teaching kitchen, and an exhibition space with a movable partition for larger events.

The building envelope consists of insulated concrete wall with a 2% slope roof and curtain walls for a open and modern look. The full height windows let in ample natural light and make the cultural centre feel inviting. The second level is offset to overhang the entrance, supported by three concrete pillars. The entire building is designed to be barrier free and accessible to the whole community.





GROUP A2

OCCUPANT LOAD - 110 PERSONS

WATER CLOSETS - 3.7.4.3 A

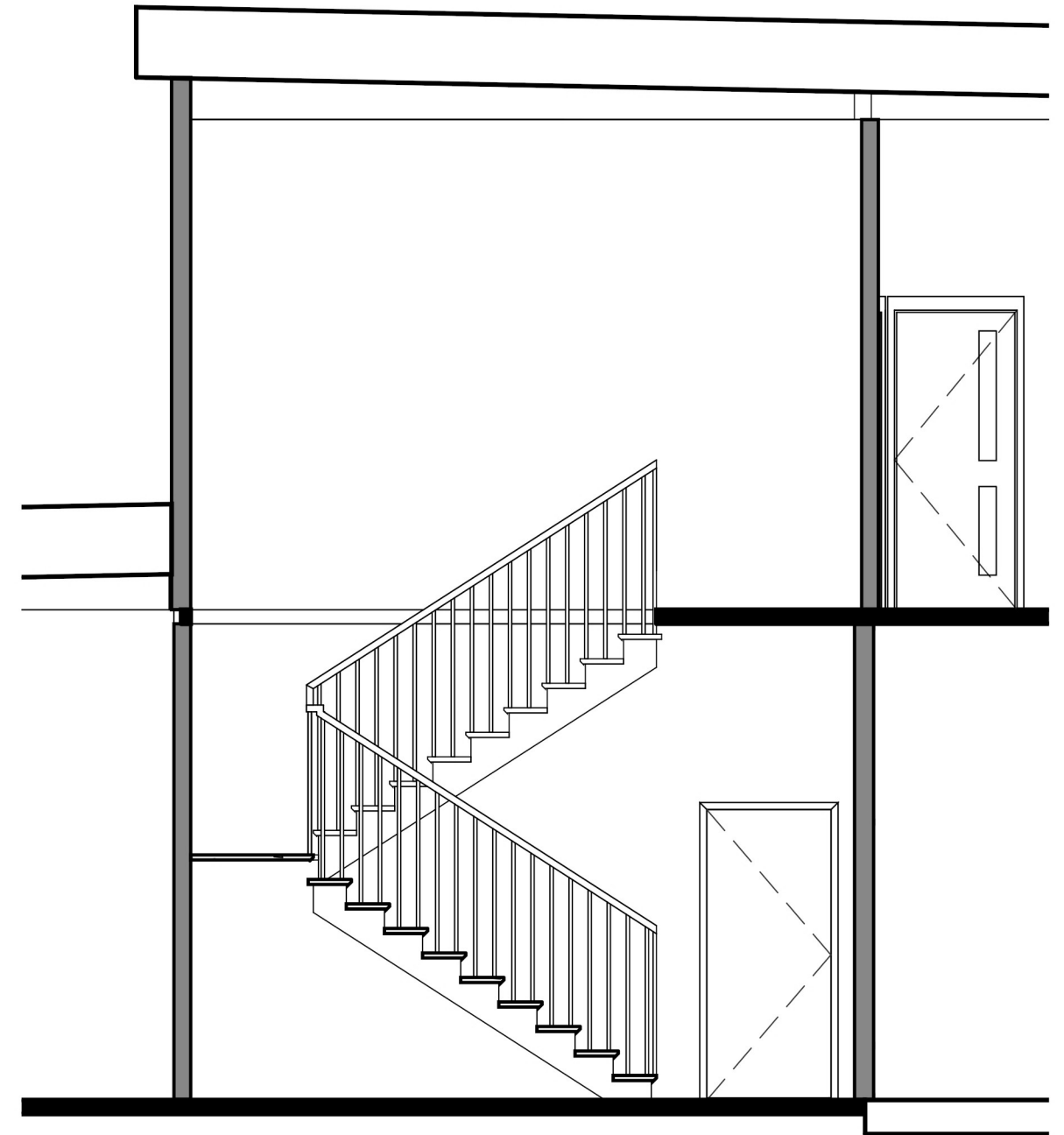
- 101 to 125 = 3 for males and 5 for females

adding universal washrooms so 2 males and 4 females instead

STAIRS

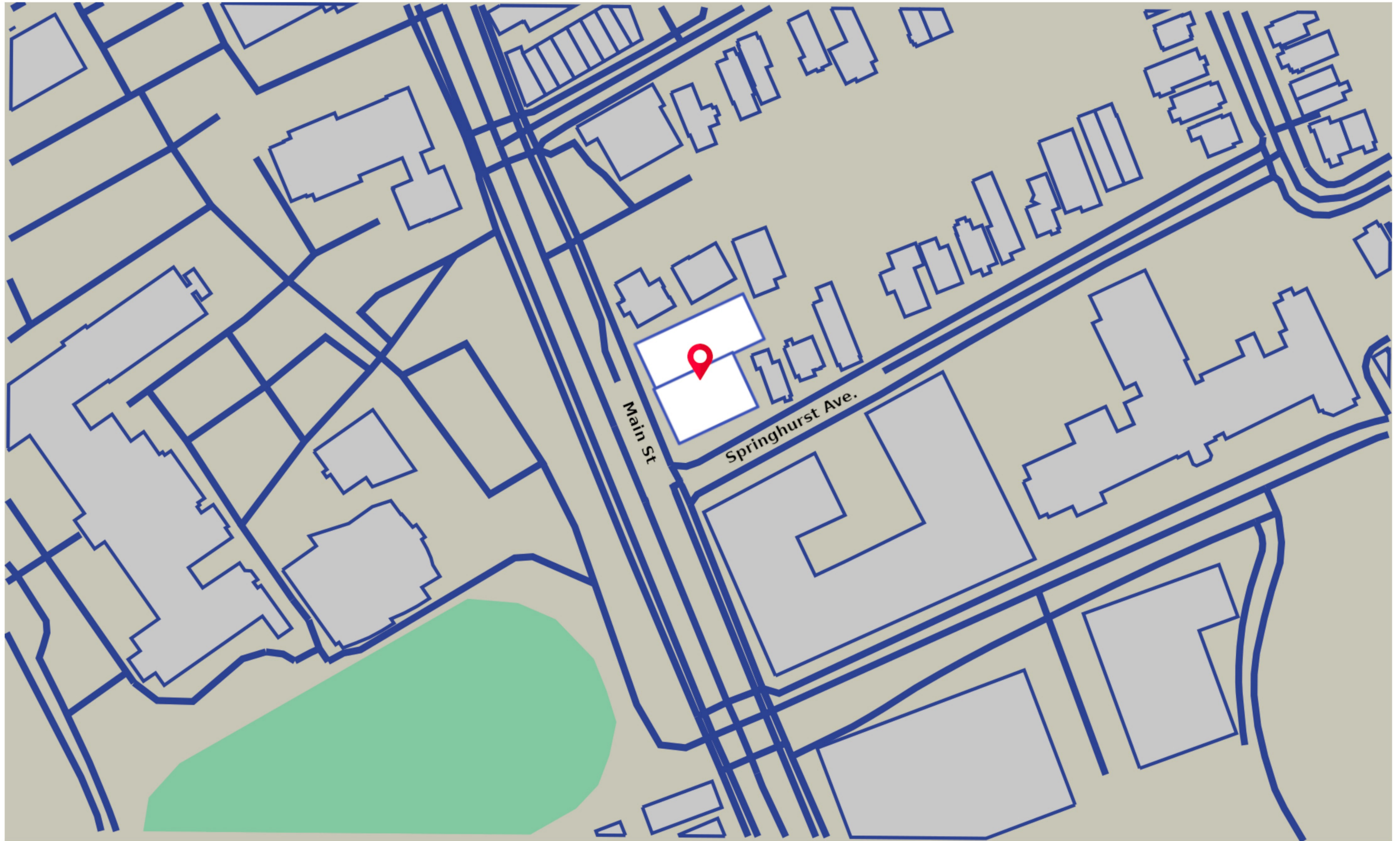
3600 FLOOR TO FLOOR = 20 RISERS @ 180mm and 280mm RUN

3.4.3.2(d) - 900mm for landing and stair width

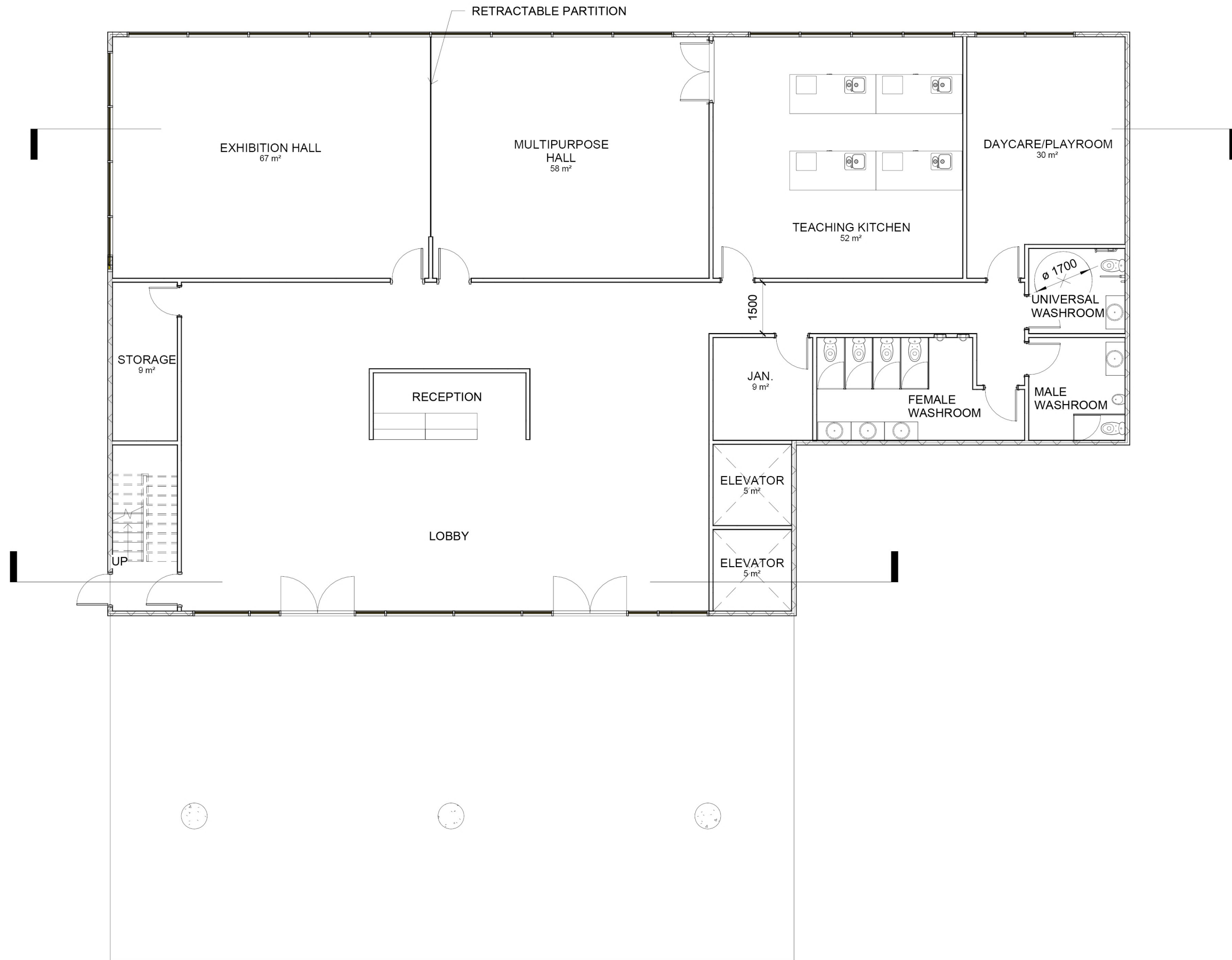


DSN8442\_020

JAMIE CHEUNG



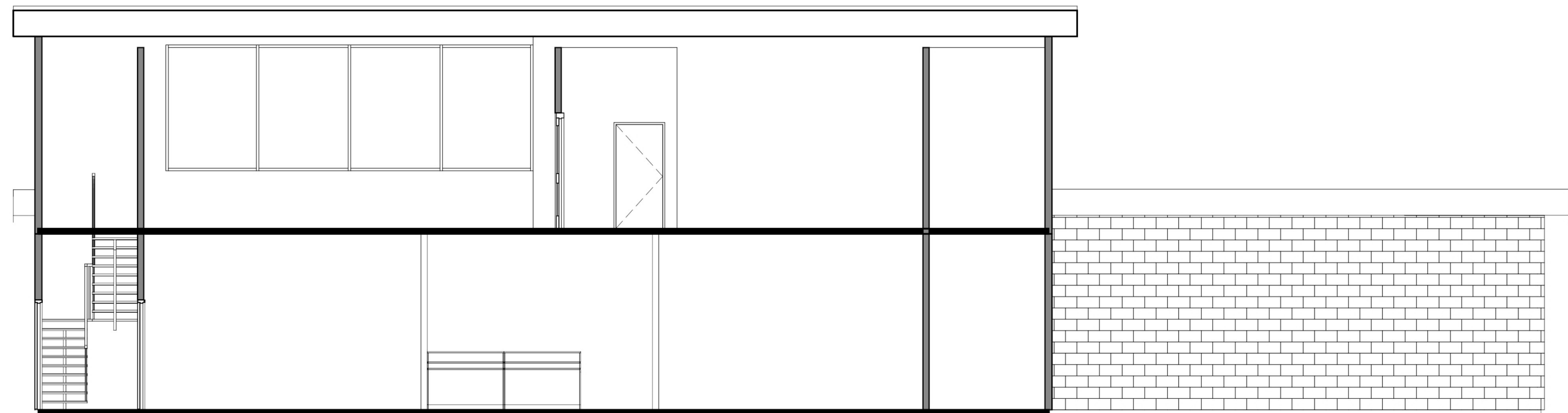
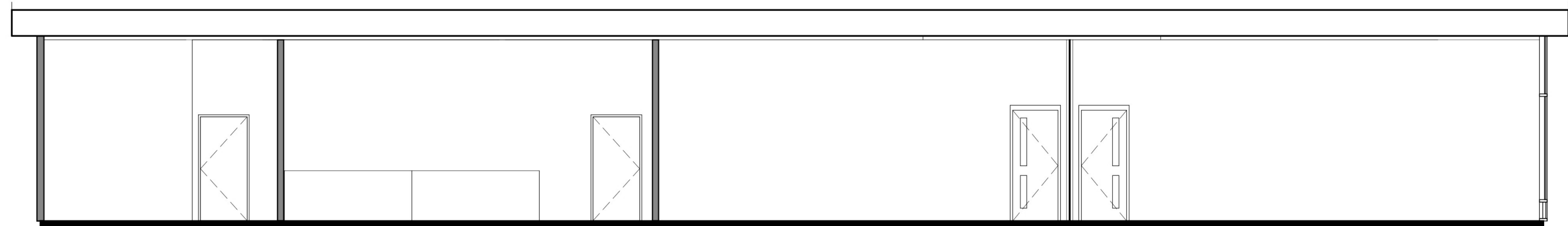
DSN8442\_020  
JAMIE CHEUNG  
SITE PLAN



DSN8442\_020  
JAMIE CHEUNG  
FIRST FLOOR



DSN8442\_020  
JAMIE CHEUNG  
SECOND FLOOR



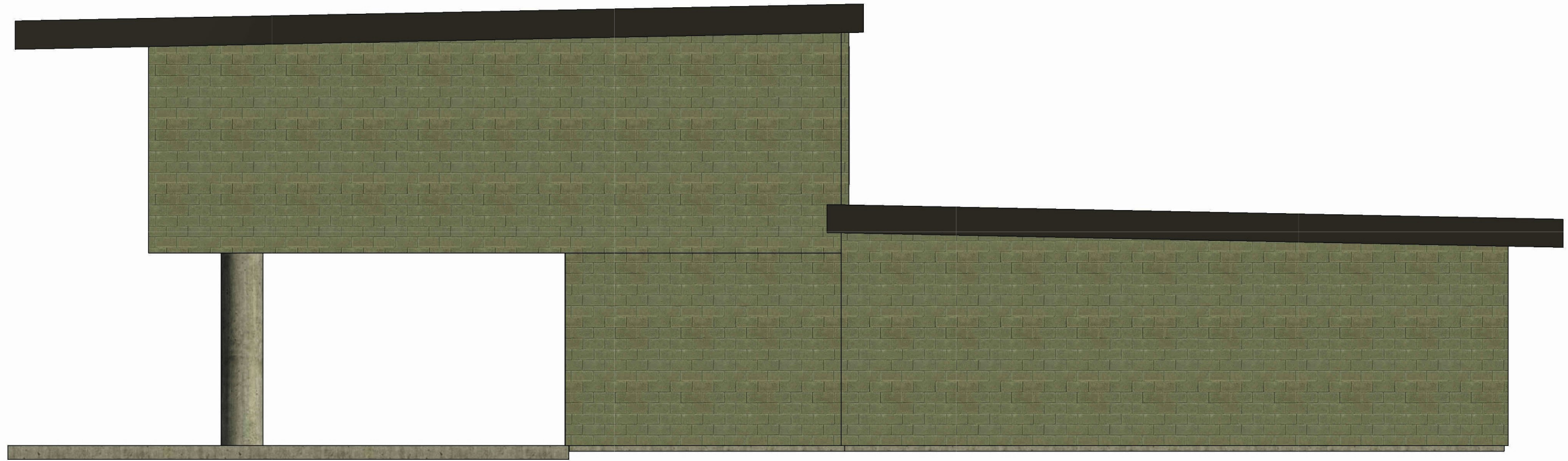
DSN8442\_020  
JAMIE CHEUNG  
SECTIONS



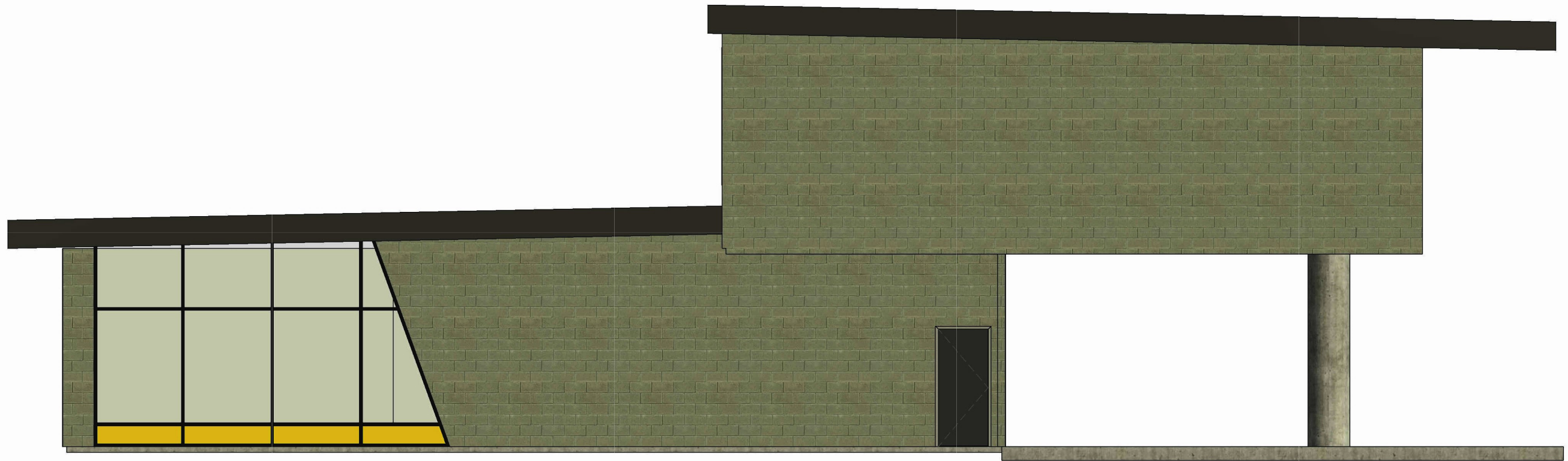
NORTH



SOUTH

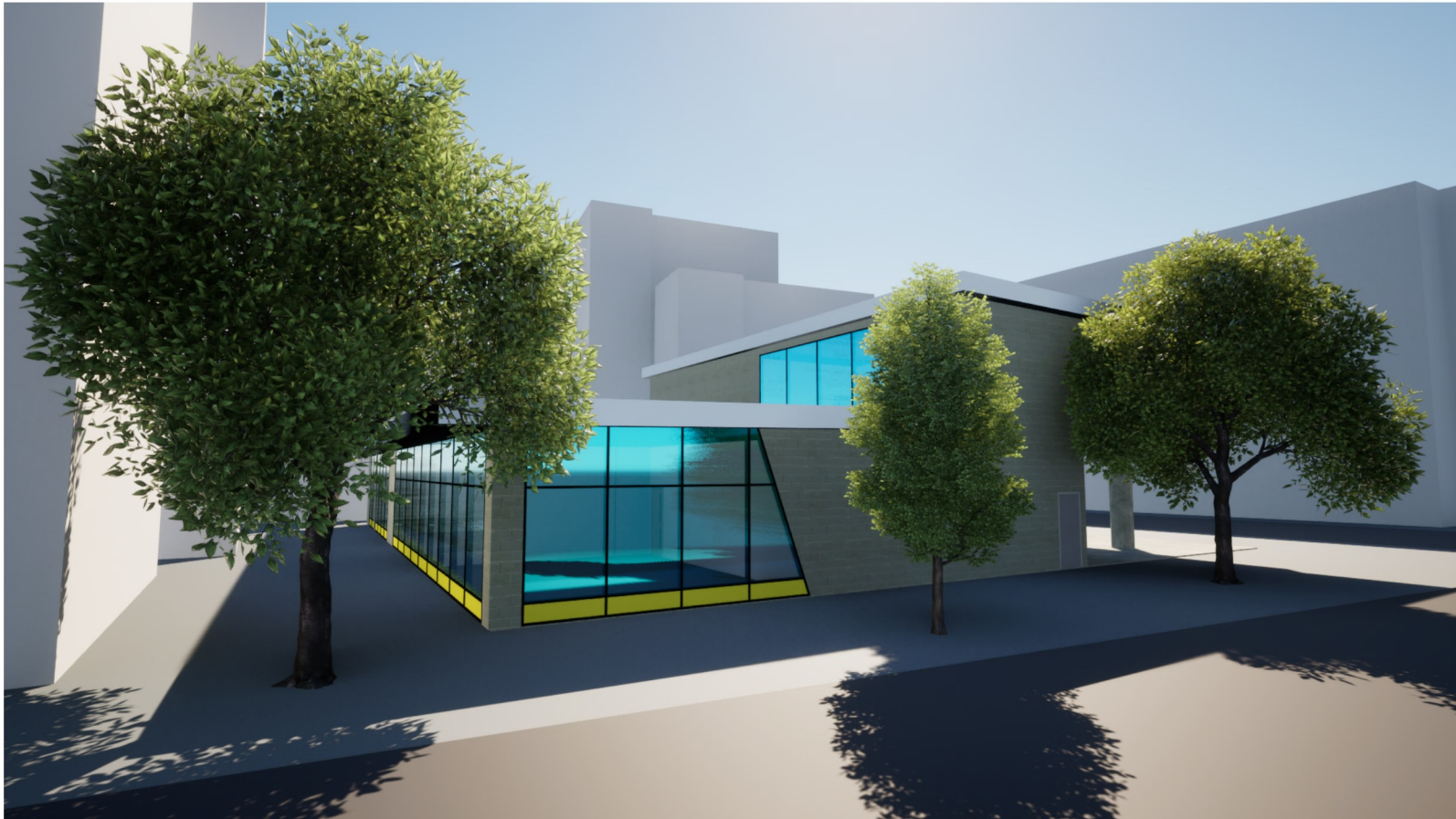


EAST



WEST





DSN8442\_020  
JAMIE CHEUNG  
EXTERIOR VIEWS



DSN8442\_020  
JAMIE CHEUNG  
INTERIOR VIEWS