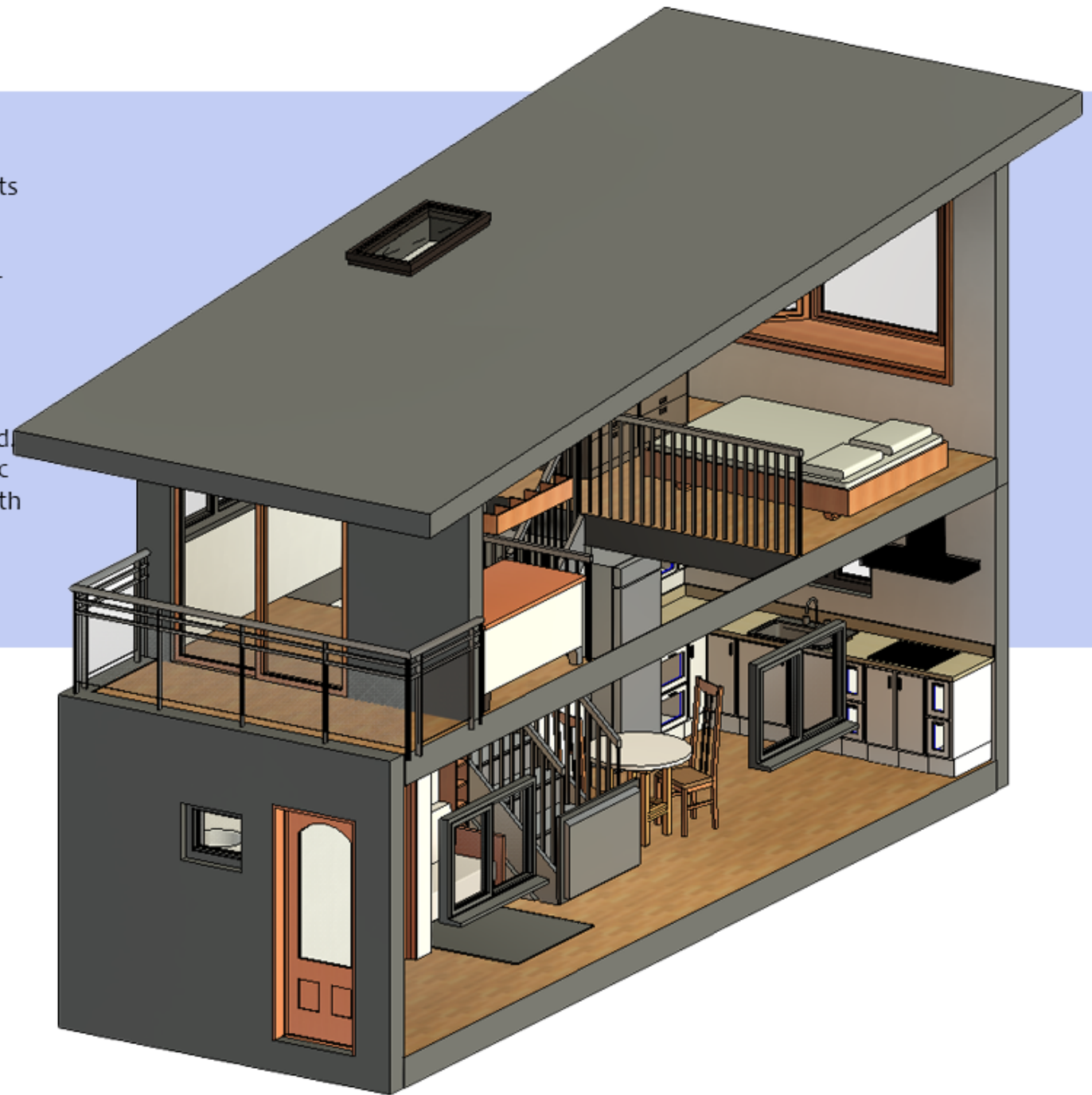
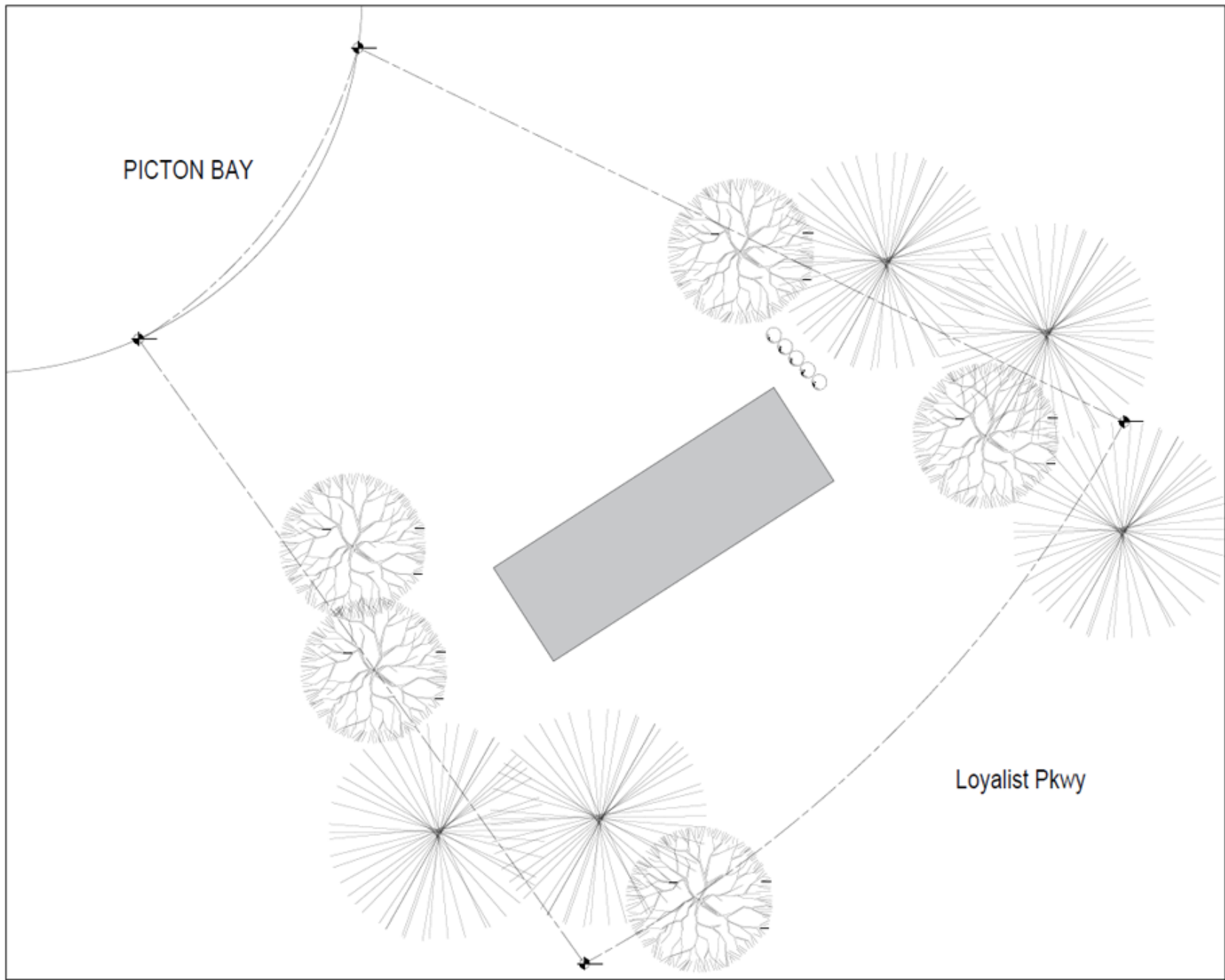


This tiny house is designed to feel open in spite of its small footprint. The house incorporates a T-shaped stairwell, allowing access to a loft bedroom and office, with the area under the stairs being used for both laundry and a pantry. It features an open kitchen with plenty of storage and natural light.

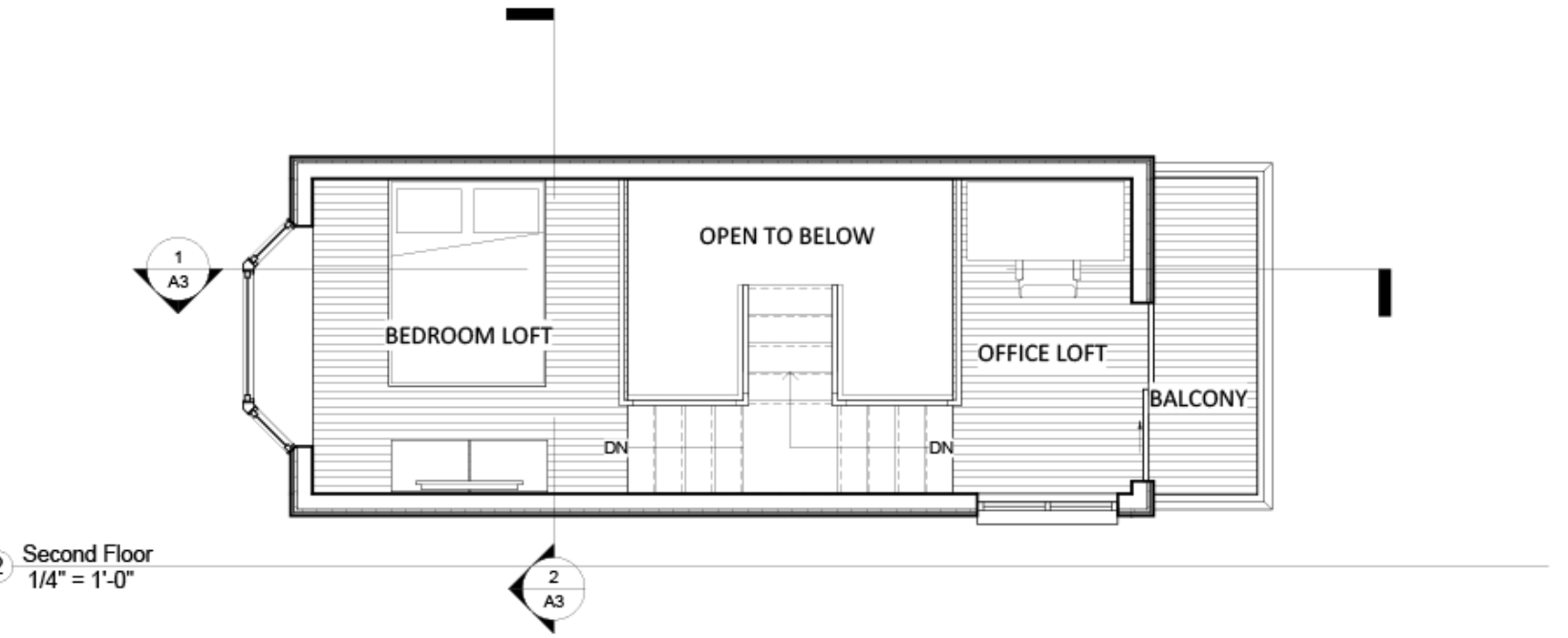
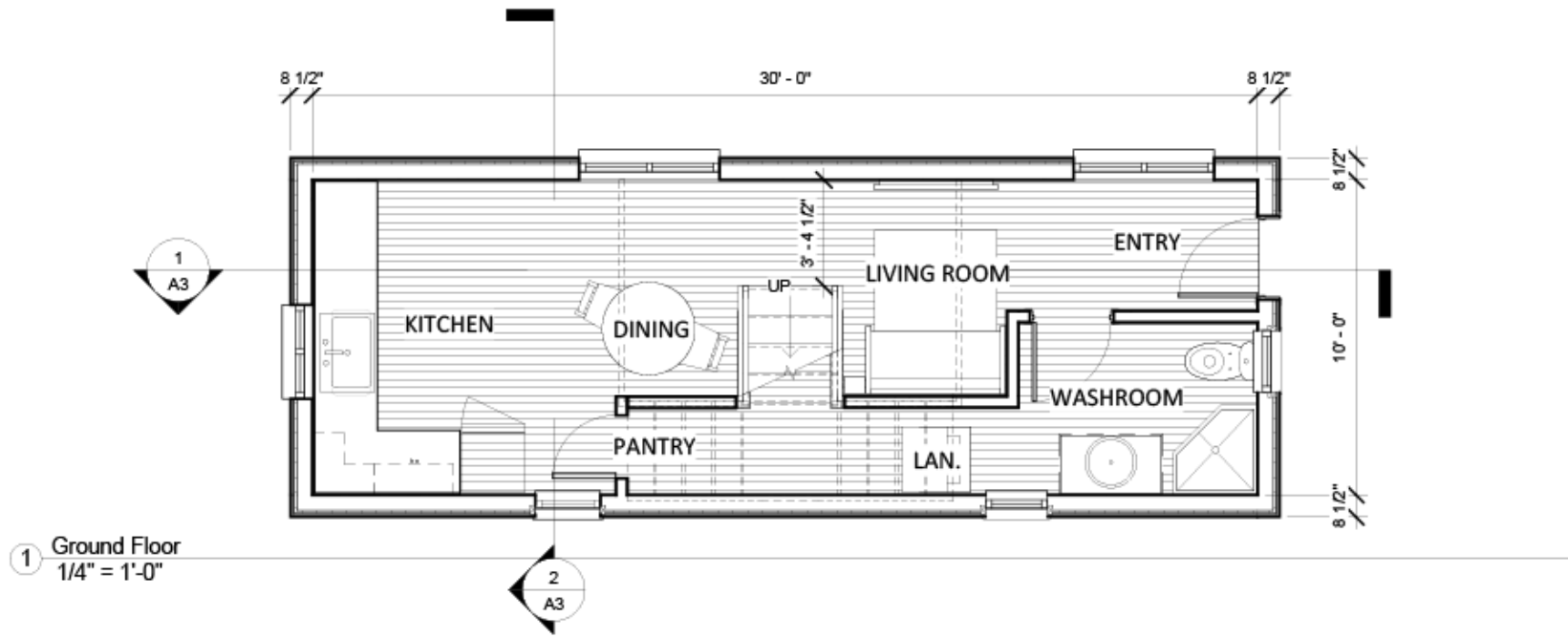
The building's envelope uses both rigid and batt insulation to ensure it stays comfortable year-round. The exterior is finished with siding, giving it a classic look with little to no maintenance needed. Even with its small footprint, this design incorporates a balcony providing a beautiful view of the bay and natural spaces around the home.





DSN8441
SITE PLAN

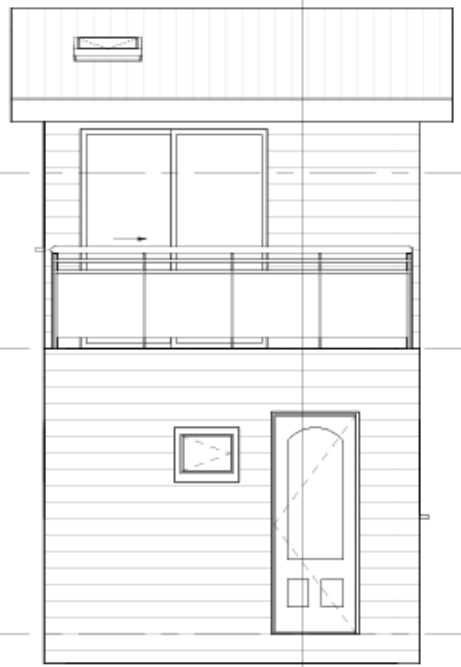
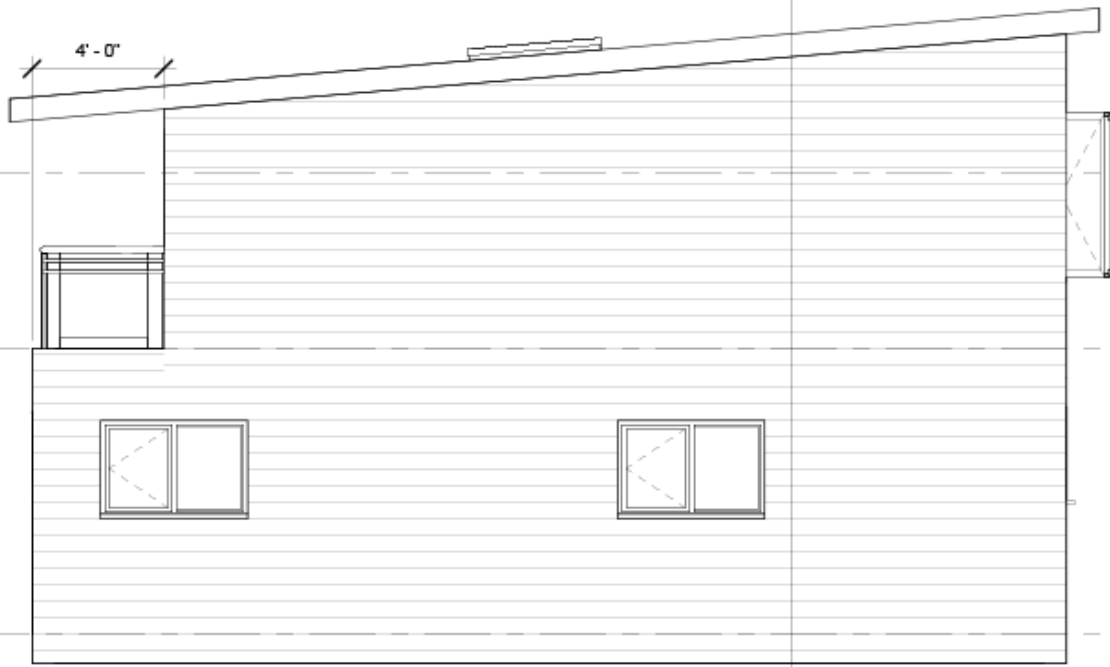
A2



DSN8441
 FLOOR PLAN
 A3

2
A3

1
A3



Top
14' - 0"

Top
14' - 0"

Second Floor
8' - 8"

Second Floor
8' - 8"

Ground Floor
0"

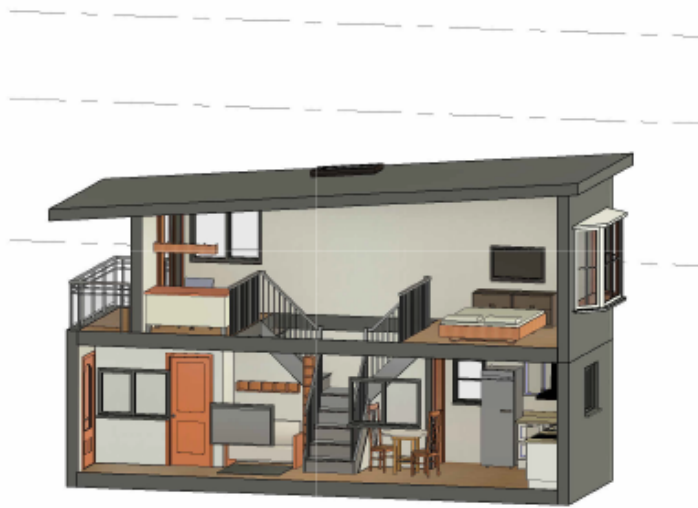
Ground Floor
0"

1 North
1/4" = 1'-0"

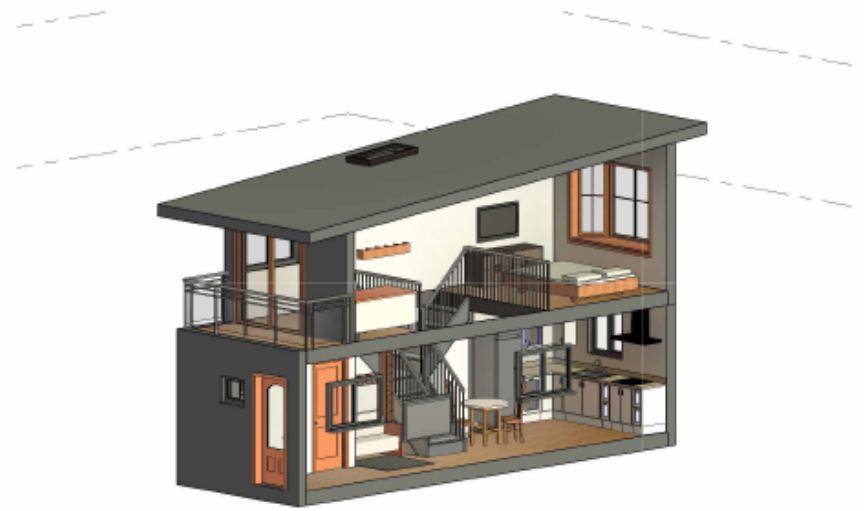
2 East
1/4" = 1'-0"

DSN8441
ELEVATIONS

A4



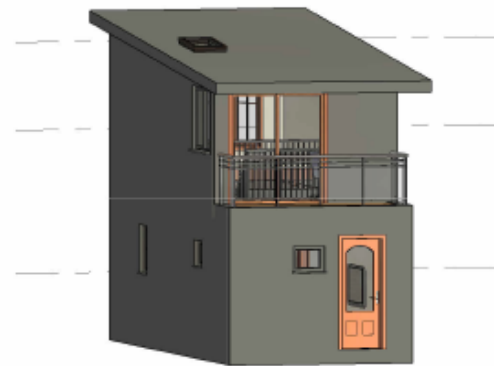
① 3D View 1



② 3D View 2



③ 3D View 3



④ 3D View 4



⑤ 3D View 5



1 View from Entry



2 Office Loft



3 Bedroom



4 View of kitchen